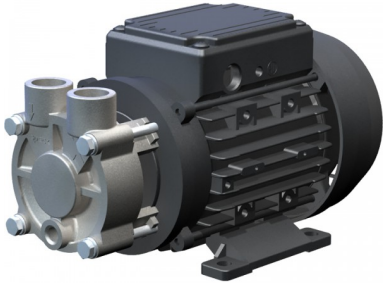


Regenerative turbine pump Y/YS-2051



These non-self-priming or self-priming regenerative turbine pumps are characterised by their high pressure with low flow rates and their compact construction. They can be applied in circuits for liquids not containing solid matter, for example in temperature control units or machine cooling systems, among others.

Details

Flow rate Q in l/min: max. 27

Total head H in m WS: max. 45

Motor performance in kW (P2): 0.35 - 0.50